

Multipurpose Building

Description – A multipurpose building is a building with a large open space that could be used for events or classrooms with moveable walls.

Ministry – A multipurpose building offers the best potential use for the members of the congregation (parties, plays, youth nights, alternative worship space). It offers the best potential use for the community (plays, group functions) which makes the community aware of our Church and School's presence. And it still answers an immediate need of providing more classrooms for the school and frees up space in our current building for fellowship, meetings, and Bible classes. A multipurpose building would help us do our current ministry better, and open up new opportunities for the future – opportunities that are flexible for the future. However the Voter's think we can best be good stewards of the Gospel – this building can fit their needs.

Price: A 10k square foot building would provide room for bathrooms, storage, and an 8k square foot area for multi-purpose use that could potentially hold up to 7 classrooms. Operating at \$150/square foot the price would be approx **1.5 million dollars**.

Pros – Answers an immediate need for classrooms and space. Flexible for community events and worship space if necessary. Usable by Church, school, and community.

Cons – Price: We would likely need a Capital Campaign or pledge drive. Classrooms will need to be flexible with their set up should they need to move walls for an event.

Other considerations:

- Stage: Could include a stage along one wall for church / school performances. Would free up storage in existing building that is currently storing our wooden stage.
- Alternative Worship Space: Could provide an opportunity for worship should something happen to our existing building or if a renovation is required.
- Placement? Proximity to parking. Proximity to offices? Take up some of our "green footprint"?
- Freed up space – Could get a fellowship hall in the main building. Perhaps a meeting room?

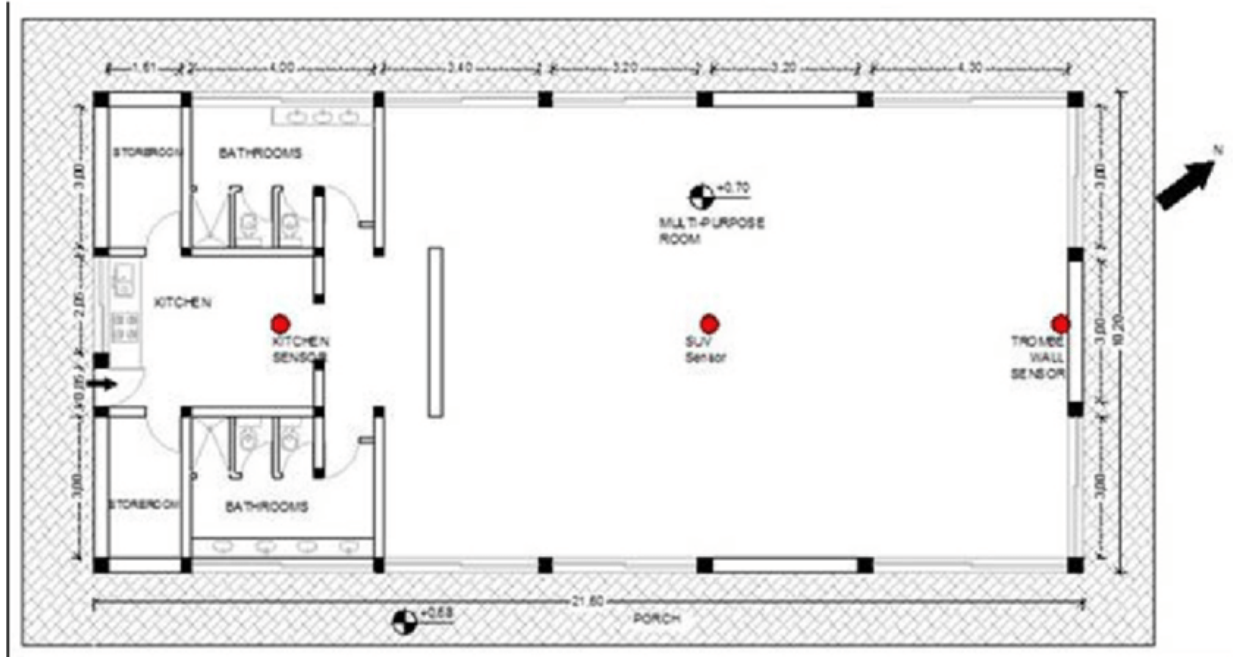


Figure 1 An EXAMPLE floorplan of a multipurpose building