



**1 Peter 1:3**

*God has given us  
a living hope  
through Jesus*

**Hope Lutheran Church and School  
2071 12th Street  
Idaho Falls, ID 83404**







“Praise be to the God and Father of our Lord Jesus Christ! In his great mercy he has given us new birth into a living hope through the resurrection of Jesus Christ from the dead.”

**1 Peter 1:3**

Our Congregation is named “Hope.” We use that word a lot, often in wishful ways, like “I hope the Colts win the Super Bowl.” Is this the Hope of the Bible? No! We profess in our congregational mission statement to share the Certain Hope in Jesus. Our Ministry Expansion Team shares another aspect of Biblical Hope: a Living Hope. Our Hope is founded on the Savior who Lives and has promised to watch over His Church and His people, and to give us a share in his resurrection eternity. We have nothing to fear because we have a Living Hope. It is God’s Hand that blesses, guides, and grants the Victory. It is His Word and His Sacraments that are at Work, in the Holy Spirit, to create, to build, to absolve, to redeem, to save.

If He does the Work, and buildings don’t, why bother with buildings? While a physical structure is not required for there to be a Church, we see throughout Scripture that the people of God used their gifts and resources to establish places of worship with a mind toward reverence and good order. The Tabernacle and Temple were richly adorned and beautiful. In the New Testament, people gathered in homes and synagogues. Time and again, the building

blocks of infrastructure are used by the Church to facilitate sharing the Gospel.

Throughout history, Christians have used a variety of tools to spread the Good News, from manuscripts and ships, to Reformation-era printing presses, to radio, to the internet. Does the Church need these tools? No. We need only God and His Word. But the Church uses them.

With God’s grace, Midwesterners who moved to Idaho Falls for their careers many decades ago established a congregation with a school; it was named Hope. Are we still a people of hope in the Resurrected, Living Lord of the Church? This facility has blessed the proclamation of the Gospel (perhaps it’s the other way around) for years. Let’s be thankful, even as we now ask how we might use a new/updated facility.

As we move forward, may we be people of a certain and living Hope. If we are afraid of the possibility of failure, may we receive comfort from the very question we already asked, “Why build if God does all the real work?” Folks, if all we need is the Word and Sacrament – then why must we fear failure? Those gifts are free and we will always have them; there is no need for fear.

This is not to say we shouldn’t “count the cost.” That’s what this Ministry Expansion Campaign is about. How can we steward the gifts God has given us and use them for more opportunities to Enhance our worship life, Expand classical education, and Engage the community?

Thank you for giving prayerful consideration to this project. What a blessing to be called His Children and to be a part of His work in the world.

Rejoice! No matter the outcome, God will bless his people. He has promised it.



## Dear Brothers and Sisters in Christ,

Hope Lutheran Church and School has been blessed with our current worship and school facilities. These facilities have served us well for over forty years, since we moved to this location in 1980. However, it is time to consider building for the future to increase the opportunities to spread the Gospel throughout the Idaho Falls community. The area is growing rapidly and as a result, we need additional space to accommodate more worshippers and students!

The total estimated project cost to modernize our existing building and expand our school is \$3 million. We already have half a million set aside for this project. There is an additional bequeath made to the church and school that will add to this amount, dependent on the wishes of the voters. Our goal for the Ministry Expansion Campaign is to raise \$1.5 million. If we exceed this goal, it will help lower our long-term mortgage with the Lutheran Church Extension Fund (LCEF).

Our goal is to have 100% participation from both our congregational members and school parents. What does this mean? We are asking for your support to bring this project to completion via prayer, time and talents, and financial resources. The 100% participation goal means that we have everyone praying for our project. If families can contribute their time, talents, and financial resources, even better! By everyone pulling together, we will succeed, with God in overall command.

Hope Lutheran Church and School has been spreading the Gospel message for over 66 years. It is our hope to continue for at least another 66 years!

Yours in Christ,


Kurt Pavlat  
Campaign Director





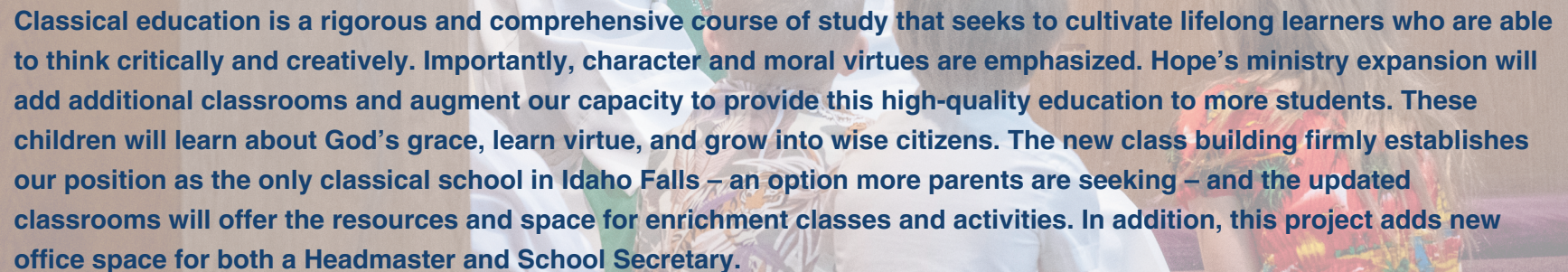
# ENHANCING WORSHIP

## VISION FOR EXPANDING HOPE'S MINISTRY



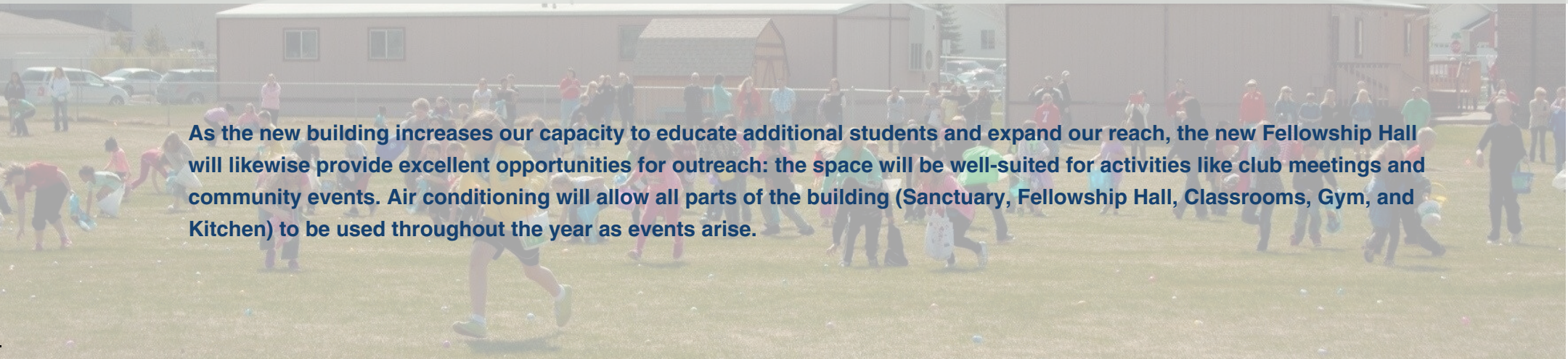
Gathering to receive the Lord's gifts is the most important thing we do – or rather, that He does for us. While honoring the legacy of Hope's memorials, this plan proposes further beautifying our Sanctuary with décor that focuses our eyes, hearts and minds on God and his gifts in Jesus. This might include additional seating, balcony renovation, and a section of pews with kneelers. Air conditioning facilitates more sanctuary use in summer. A Fellowship Hall provides dedicated space to gather after church, for Bible classes, and for other appropriate events. Parking and restroom enhancements make it easier for the disabled, the elderly, and families with young children to attend worship.

# EXPANDING CLASSICAL CURRICULUM



Classical education is a rigorous and comprehensive course of study that seeks to cultivate lifelong learners who are able to think critically and creatively. Importantly, character and moral virtues are emphasized. Hope's ministry expansion will add additional classrooms and augment our capacity to provide this high-quality education to more students. These children will learn about God's grace, learn virtue, and grow into wise citizens. The new class building firmly establishes our position as the only classical school in Idaho Falls – an option more parents are seeking – and the updated classrooms will offer the resources and space for enrichment classes and activities. In addition, this project adds new office space for both a Headmaster and School Secretary.

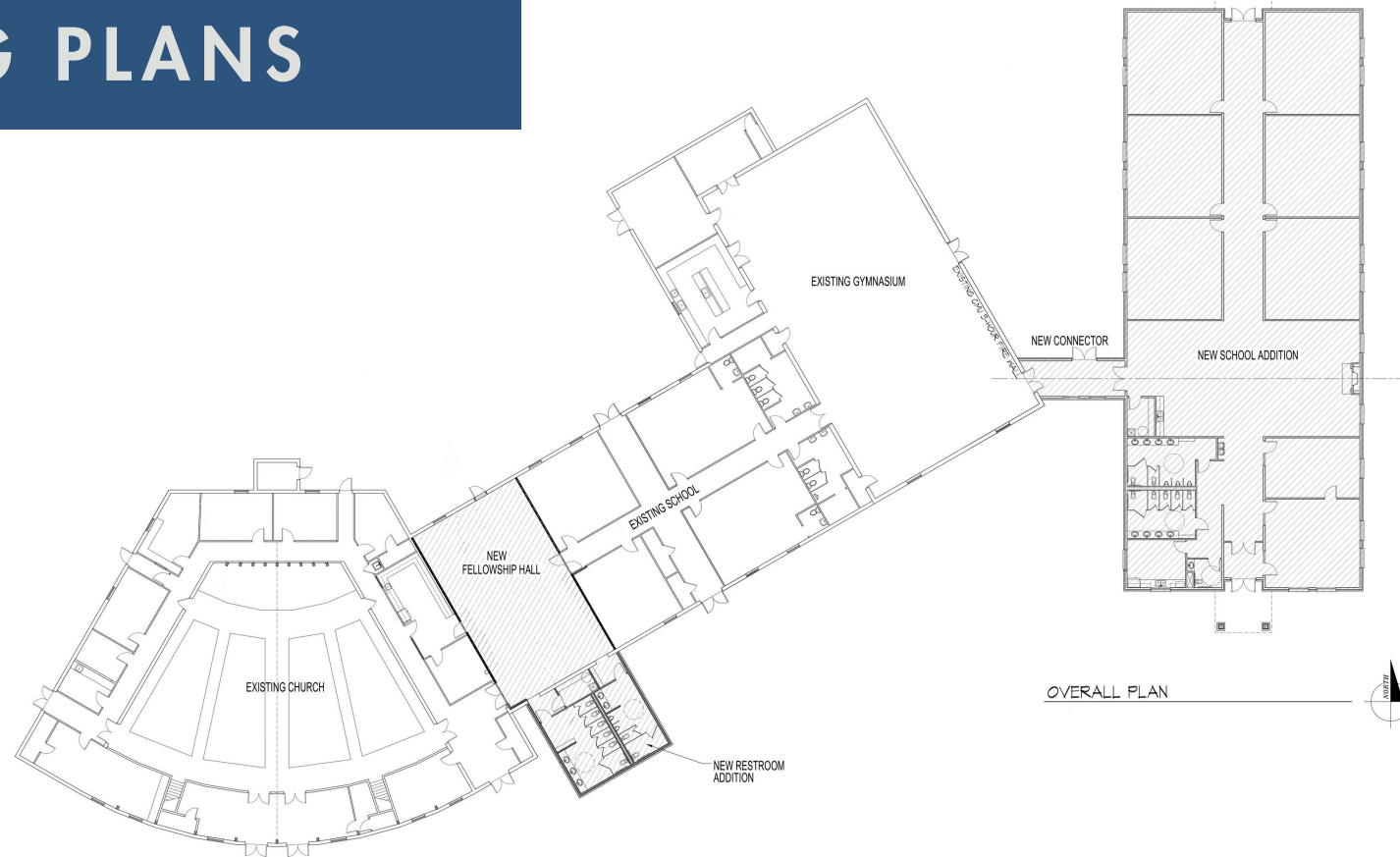
# ENGAGING THE COMMUNITY



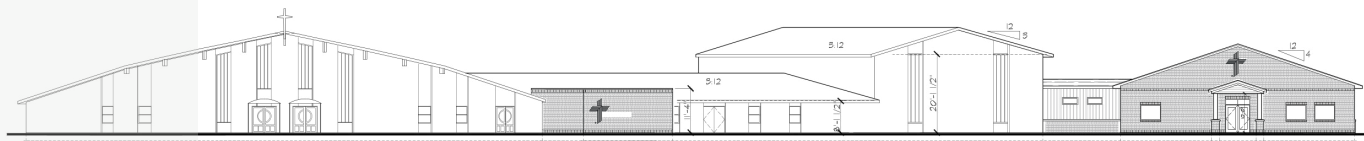
As the new building increases our capacity to educate additional students and expand our reach, the new Fellowship Hall will likewise provide excellent opportunities for outreach: the space will be well-suited for activities like club meetings and community events. Air conditioning will allow all parts of the building (Sanctuary, Fellowship Hall, Classrooms, Gym, and Kitchen) to be used throughout the year as events arise.



# BUILDING PLANS

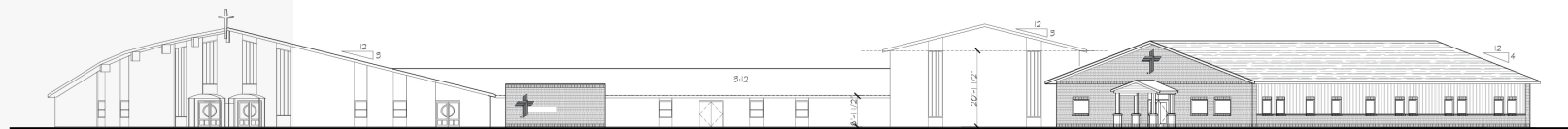


OVERALL PLAN



SOUTH ELEVATION

STRAIGHT VIEW FROM STREET

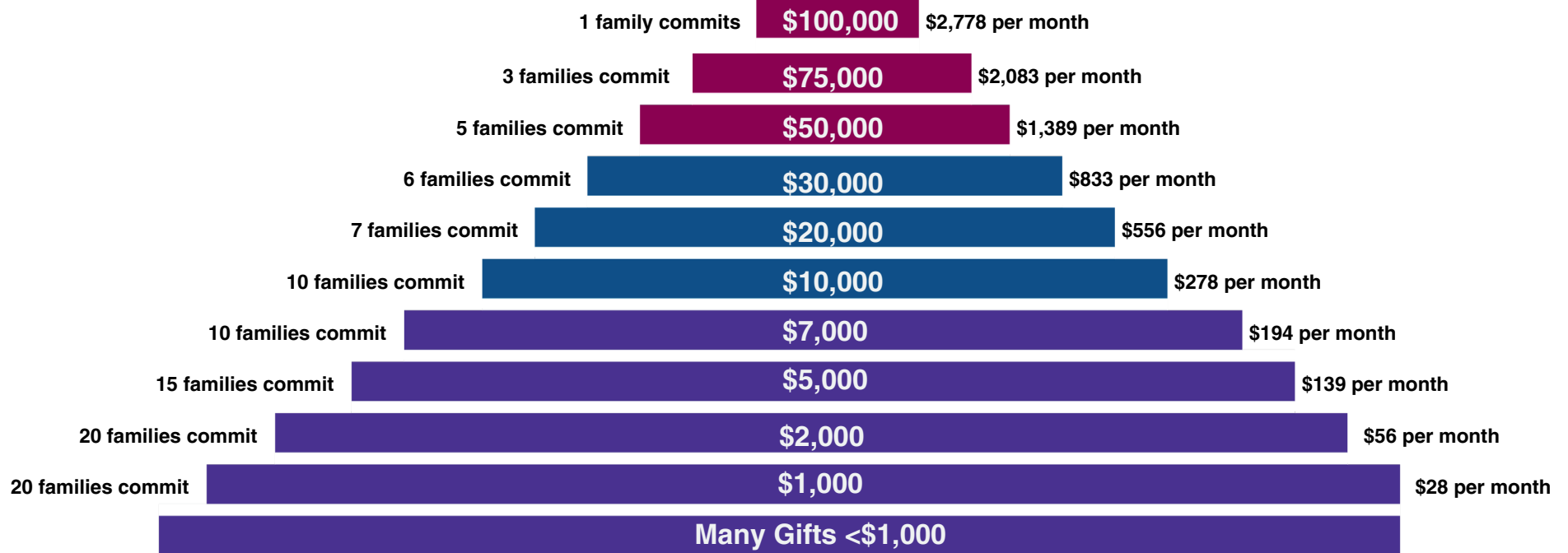


SOUTH-EAST ELEVATION

STRAIGHT TOWARD FELLOWSHIP HALL & GYM

# GIFT GIVING PYRAMID

**Gift Profile Goal:**  
**\$1,200,000**



**Giving is over 3 years, over and above our regular giving.**

*"Now to Him who is able to do immeasurably more than we can ask or imagine..."* Ephesians 3:20-21

## HOW CAN I DONATE?

If giving by bank check, make it payable to Hope Lutheran Ministry Expansion Campaign or shorten it as Hope Lutheran MEC and either mail it to:

**Hope Lutheran Church**  
**2071 12th Street**  
**Idaho Falls, ID 83404**

**OR**

**place it in the Sunday  
collection plate**

If paying by credit card online, visit the website:

<https://www.allabouthope.org/donations/>

for either a one-time gift or  
sign up for monthly gifting.



# MINISTRY EXPANSION CAMPAIGN TIMELINE

## LAUNCH SUNDAY

March 16th

Event: Luncheon

Time: After Service

Where: Gymnasium

## FORUMS

March 23rd

March 30th

## COMMITMENT

May 17th

Leadership Commitment

June 1st

Commitment Sunday

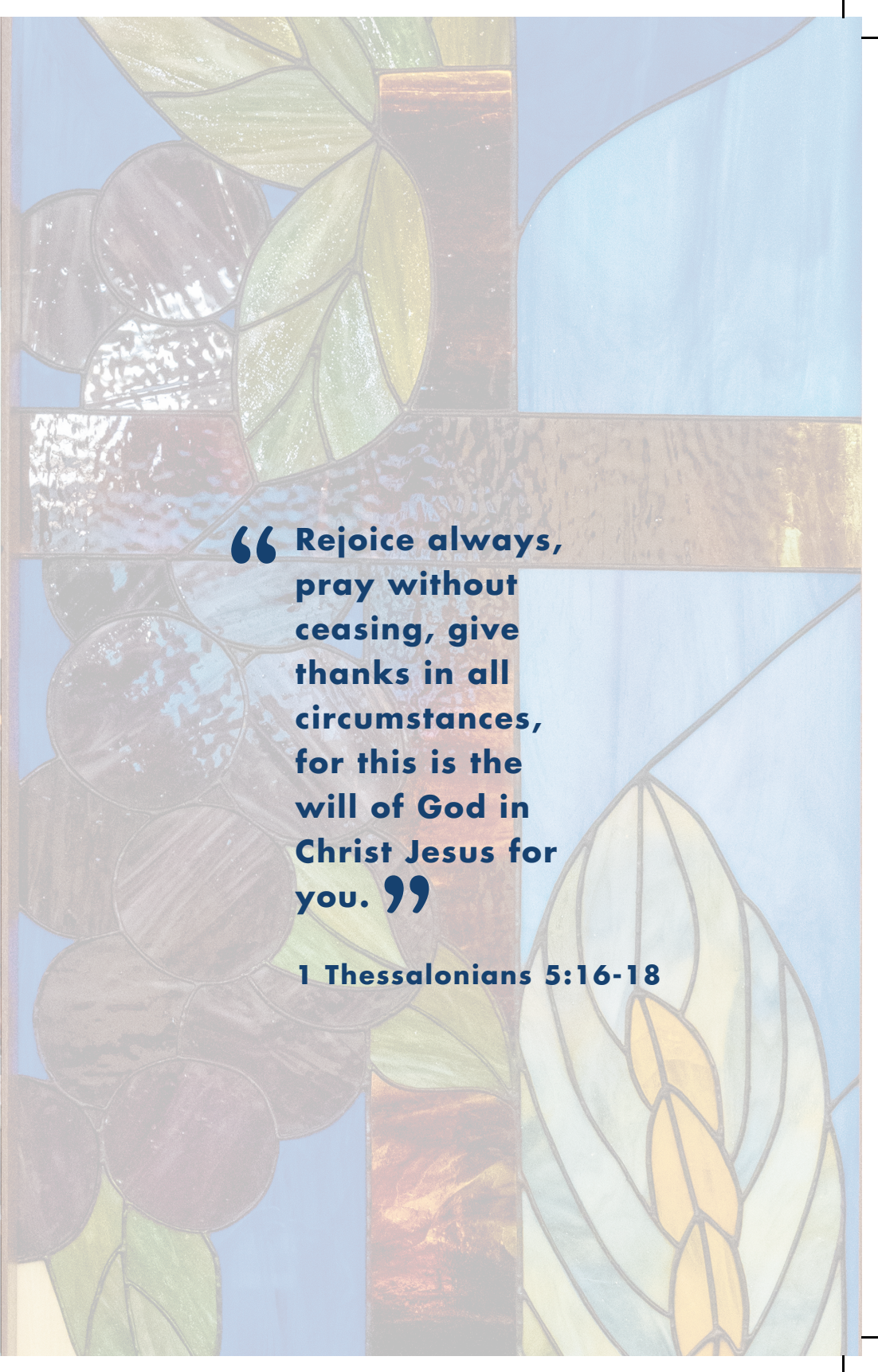




A photograph of a person's hands playing a multi-manual organ. The organ has several keyboards and a complex console with many stop tabs. In the background, there is a music stand with sheet music, a computer monitor, and a lamp. The scene is dimly lit, with light coming from the organ's console and the background screen.

**“ With God all things  
are possible. ”**

**Matthew 19:26**

A close-up of a stained glass window. The design features a large, stylized flower or leaf motif in shades of green, yellow, and blue, set against a background of smaller, circular or oval shapes in various colors. The glass is divided by dark lead lines.

**“ Rejoice always,  
pray without  
ceasing, give  
thanks in all  
circumstances,  
for this is the  
will of God in  
Christ Jesus for  
you. ”**

**1 Thessalonians 5:16-18**





**For more information:**

**Hope Lutheran Church & School  
2071 12th Street  
Idaho Falls, ID 83404**

**Phone: (208) 529-8080**

**Website: [allabouthope.org](http://allabouthope.org)**

**Email: [hlcs@allabouthope.org](mailto:hlcs@allabouthope.org)**









